

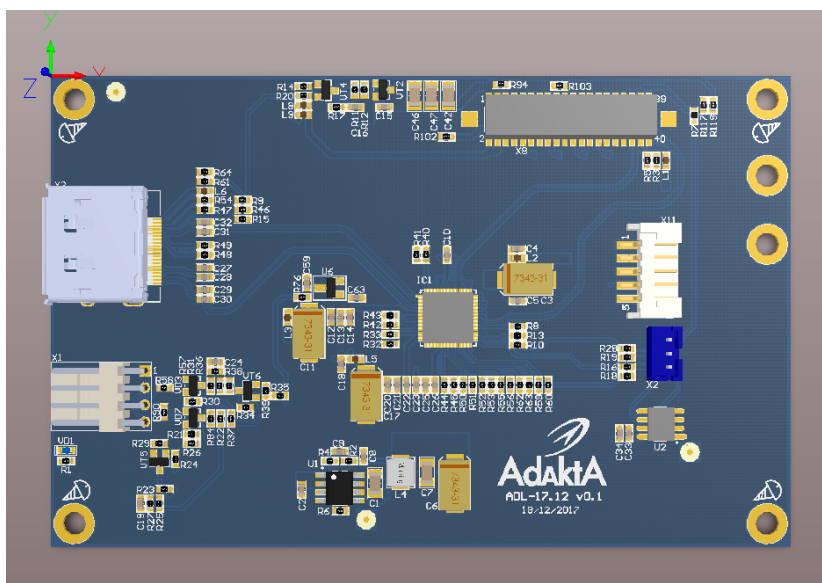


DP-LVDS converter ADL-17.12

ADL-17.12 converter is designed to convert the DisplayPort (DP) interface into LVDS. The graphics modes can be configured by flashing EDID or via DDC (OS Linux, Windows).

Specification:

- Input: DisplayPort;
- Output: LVSD (2 channels);
- Chipset: NXP PTN3460BS;
- Manage: DDC (i2c), EDID (EEPROM);
- Display backlight inverter control : yes;
- Indicator: yes;
- Power: DC 12V;
- Dimension: 110 mm * 70 mm.



Available: Q2 2018